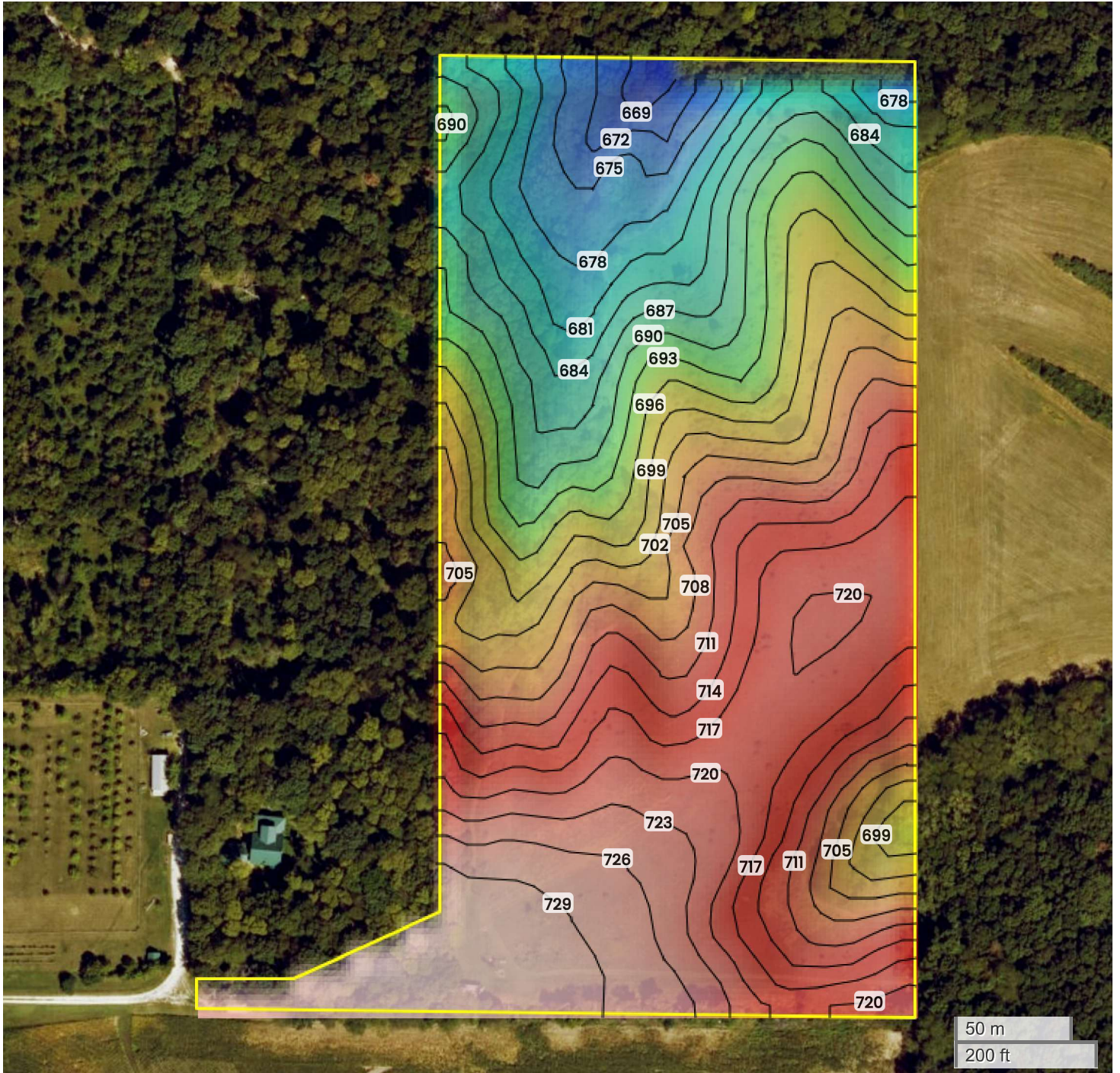




IGLEHART  
TOPOGRAPHY



669 ft

729 ft



Center: 41.179417, -91.550050

28-74N-6W

Crawford Township  
Washington County, IA

Source: USGS 10m DEM

Interval(ft): 3

Max: 729.0 ft

Min: 669.0 ft

Range: 60.0 ft

Average: 699.0 ft

FarmWorth, LLC makes no warranties, express or implied, regarding the accuracy of any information provided through FarmWorth.com. User is solely responsible for independently verifying all information prior to use and waives any claims against FarmWorth, LLC arising from inaccuracies in such information.